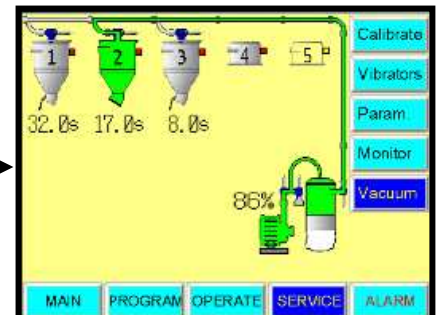
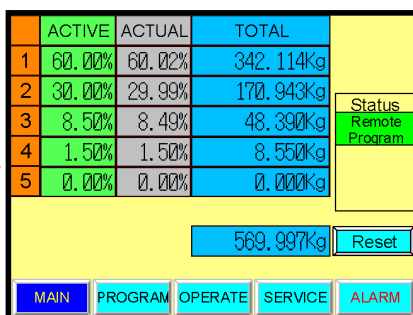
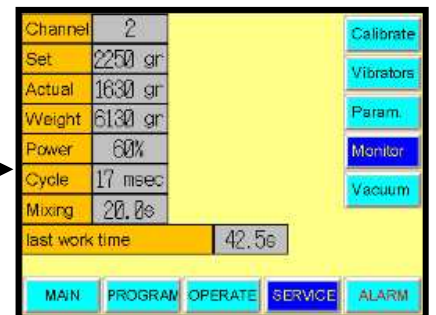
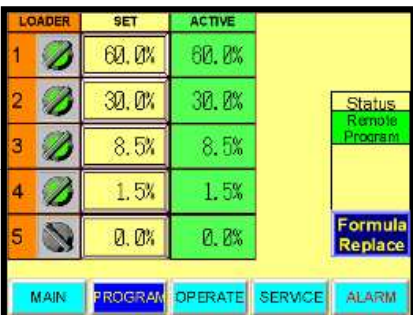
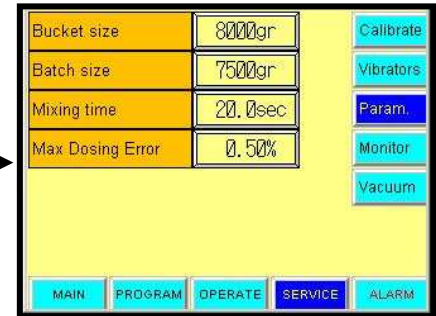
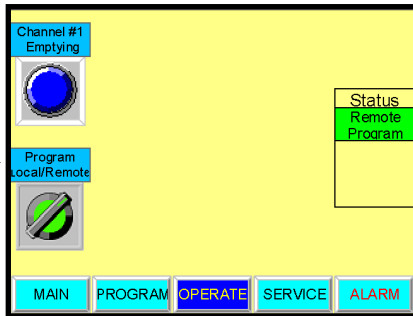
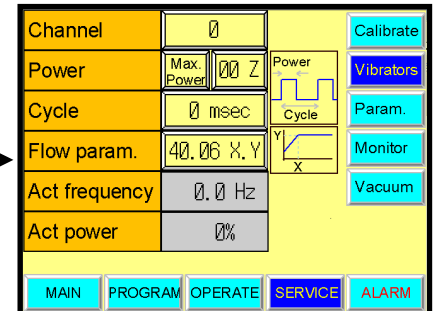
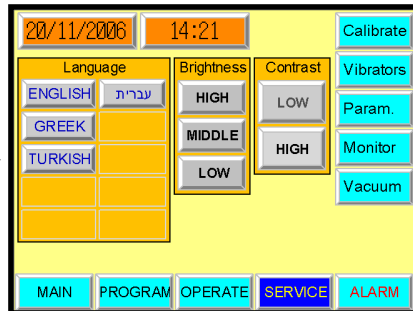
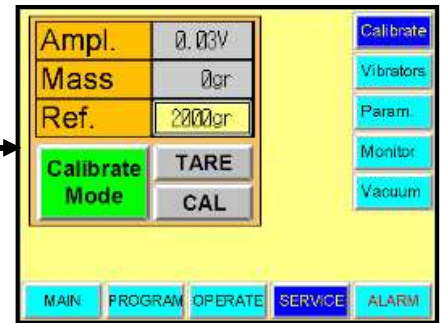
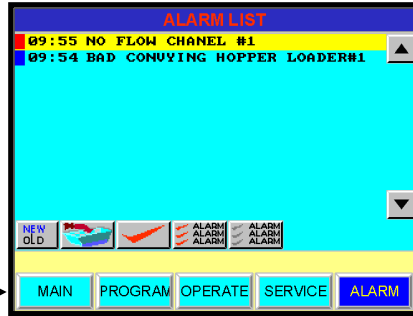
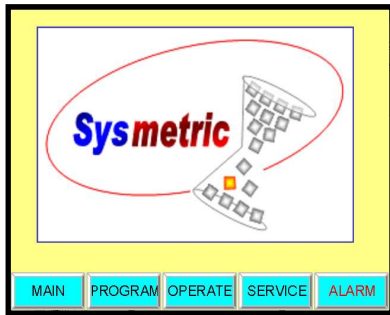


# CD Series Dosing Systems Quick Start Manual

CD100 CD400 CD800



## Dosing System's Display

- The current active screen is marked dark blue in the menu.
- Switching screens is done by pressing the corresponding button.
- Some of the screens require access code.

### Main Screen

- Active – percentage of material for each channel according to the dosing formula.
- Actual – actual percentage of material from each channel. The active to actual ratio indicates accuracy.
- Total – material accumulators for each channel with reset option.

### Program Screen

Used for editing the dosing formula and activating the material hopper loaders.

- Set – editing a new dosing formula by setting percentage for each channel. If the new formula sums to 100% the **Formula Replace** button appears. Pressing this button updates the active formula (when a new batch starts).
- Active – the active dosing formula used for making the material batches.

If the **Formula Replace** button is not pressed the dosing system continues making batches according to the old formula. If the edited formula differs from the active formula for more than 5 minutes the system alarms "Formula not replaced".

### Operate Screen

Holds buttons and switches for controlling the dosing system.

- Empty Channel 1 – button for manually opening and emptying channel 1.
- More optional switches such as computer control, machine hopper loader, low level mode, recycled screw etc.

### Service Screen

Enables adjusting brightness and contrast, time and date, selecting language and accessing more service screens:

- **Calibrate Screen** – used for calibrating and testing the weighing system. It is recommended to calibrate once a year.
- **Vibrator Screen** – parameters of the vibrators (used only by Sysmetric).
- **Parameters Screen** – parameters of the batch: batch size, bucket size, mixing time and more.
- **Monitor Screen** – shows the status of the dosing system during batch preparation.
- **Vacuum Screen** – enables activating the material hopper loaders and shows their status (flap door, level sensor, current and last vacuum time). If a vacuum pump is present, this screen also shows the status of the pump and its filter valves.

### Alarm Screen

This screen holds a log of the dosing system's alarms. Active alarms are marked red and old alarms are marked blue.

## Dosing System Operation

### Activating the dosing system

- Turn on the hopper loaders (at vacuum or program screen). Wait until the hoppers and the vibrators are filled.
- Set the desired dosing formula in the program screen.
- To start making batches, turn **System** switch to **1** (green switch on the dosing system's door). The green lamp will light.
- The dosing system will start making a batch – feeding material from the channels to the weighing bucket. During batch preparation the **System** switch lamp will blink.
- After all the materials are weighted the weighing bucket will open, the batch will drop down to the mixing hopper and the mixer will start rotating.
- The dosing system keeps making batches until the level sensor is covered with material.
- When the level sensor uncovers the dosing system will start making a new batch. The mixer is activated after every batch unless the level sensor is covered with material. In such case the mixing will start only when the sensor is uncovered again.

### Stopping the dosing system

- Turn **System** switch to **0**.
- The dosing system will stop (after finishing the current batch). The **System** switch lamp will turn off.
- To stop immediately during a batch preparation, press **Alarm Cancel** button (red button on the dosing system's door) for 5 seconds. A not complete batch will be dropped to the mixing hopper.

### Alarms

- New alarm is displayed in the alarms line at the bottom of the screen.
- If more than one alarm is active, the last alarm will be displayed in the alarms line and the number of active alarms will be shown on the left side.
- Pressing the **Alarm Cancel** button will toggle between the displayed alarms in the alarms line.
- Active alarm turns on the alarm lamp and the alarm relay. Pressing the **Alarm Cancel** button turns them off.

**For further assistance read the complete user manual or contact Sysmetric**

P.O.B. 1122, Afula Illit 18550, Israel

Phone: +972-4-6405857

Fax: +972-4-6405911

info@sysmetric-ltd.com

www.sysmetric-ltd.com