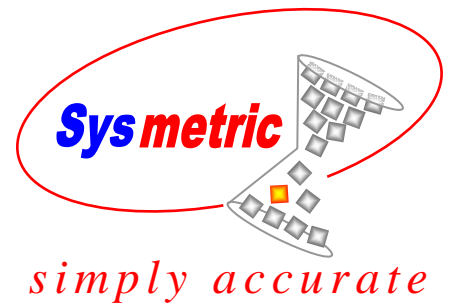


Gravimetric Dosers



BeltColor™

Gravimetric belt doser for colors and additives

Features:

- For injection molding and extrusion machines
- For granules and micro granules
- Fast and fully automatic material adaptation
- Reverse mode for easy draining and cleaning
- Wide dynamic feeding range under one setup
- Exceptional linear feeding rate
- Advanced control algorithm (C.P.R)
- Loss in weight technology
- Integrated air amplifier material loader
- Dedicated SMART PLC control



Special application

- Combination of BeltColor™ and CD™ series (hybrid system)



SMART Control:

- Backlit graphical display with keypad and function keys
- Multi-language interface
- Galvanic isolated I/O for superior protection
- Isolated 10/100 Ethernet port
- Integrated machine data acquisition
- Optional remote PC control compatibility with *MinuMan* and *InjMan* software

Capacity range with Granules *

Extrusion 0.04 kg/h – 60 kg/h

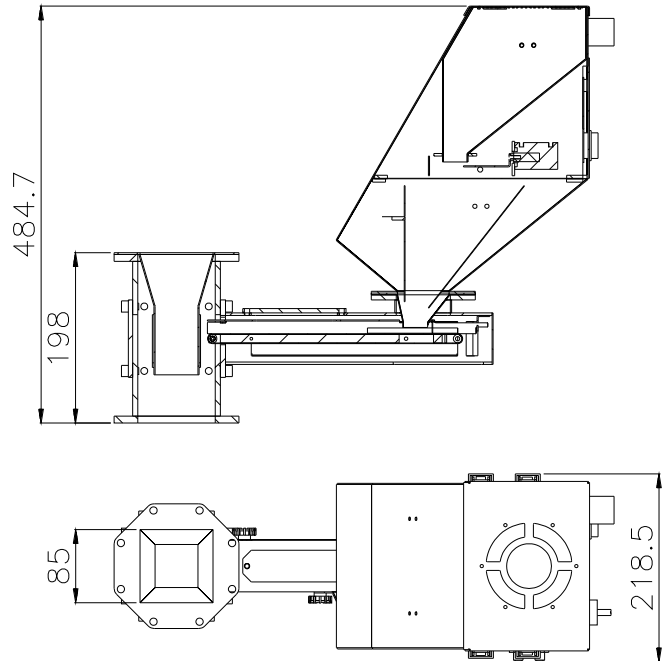
Injection 0.01 gr/sec – 17 gr/sec

Capacity range with Micro Granules *

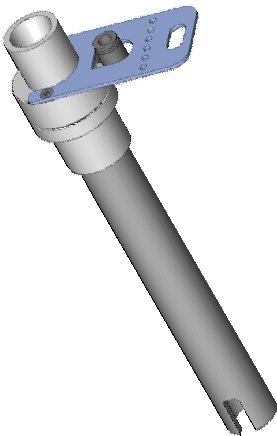
Extrusion 0.02 kg/h – 10 kg/h

Injection 0.006 gr/sec – 2.8 gr/sec

* Depending on the material's properties



Integrated air amplifier



PRESSURE (Bar)	2	3	4	5	6
Air Consumed (m³/min)	0.125	0.175	0.210	0.265	0.295
Outlet Flow (m³/min)	0.156	0.355	0.398	0.426	0.456