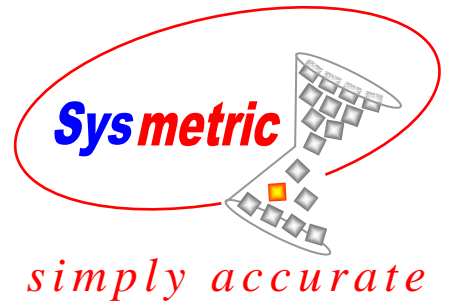


Scada Software

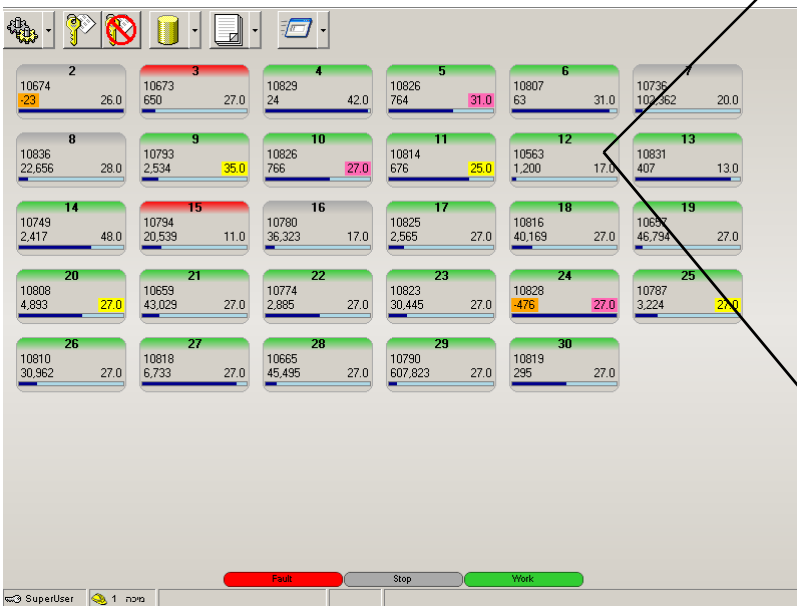


InjMan™

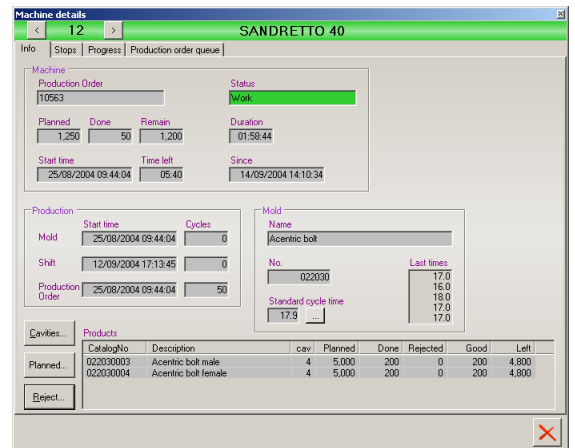
Monitoring and data acquisition for injection molding plants

Features:

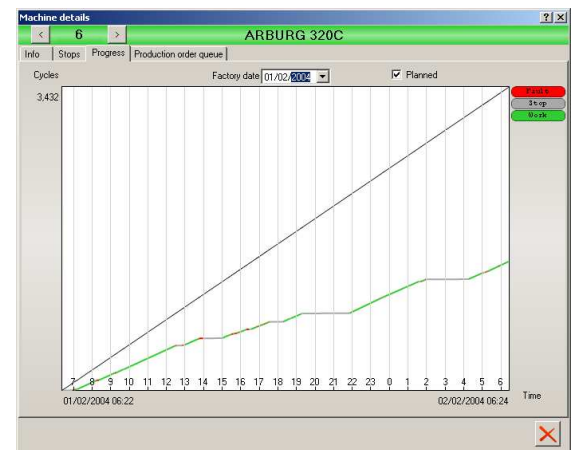
- Straightforward presentation of the machine's status
- Automatic counting and saving of number of injections
- Logical management of the working order queue
- Clear breakdown reporting
- Software can be installed on several plant computers at no additional cost
- Easy addition of new machines to the modular system
- Bi-directional communication with ERP software
- Password protected software



Main Screen – Plant molding machines



Molding machine data



Molding machine production

Machine Status

View of all the machine's statuses with the ability to drill-down on each machine individually

Displays both default and actual injection cycle times

Displays the current machine status e.g. Break-down, Stopped, Machine in operating

Displays production data

Displays mold data

Reports blocked cavities

Reports reject products

Break-down Reporting

Reports breakdown type and time of breakdown

Allow the operator to key in the breakdown cause

Work Order Queuing

Each injection machine has its own production queue

The priority of the work order in the queue can be changed

The recipes can be edited while queuing

Working orders can be relocated from one machine to another

Working orders can be deleted from the queue

Production Reporting

All production transactions are recorded to the data base

MSDE data base (free version of SQL server) available for any report generator

Provides operation data such as Production time, Efficiency, Rejects, Machine Stoppages etc