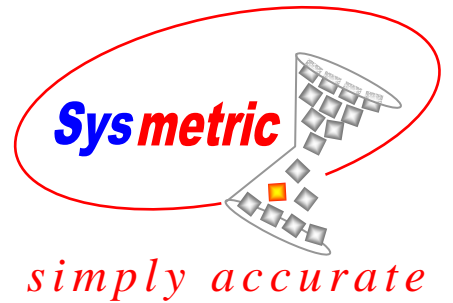


Scada Software

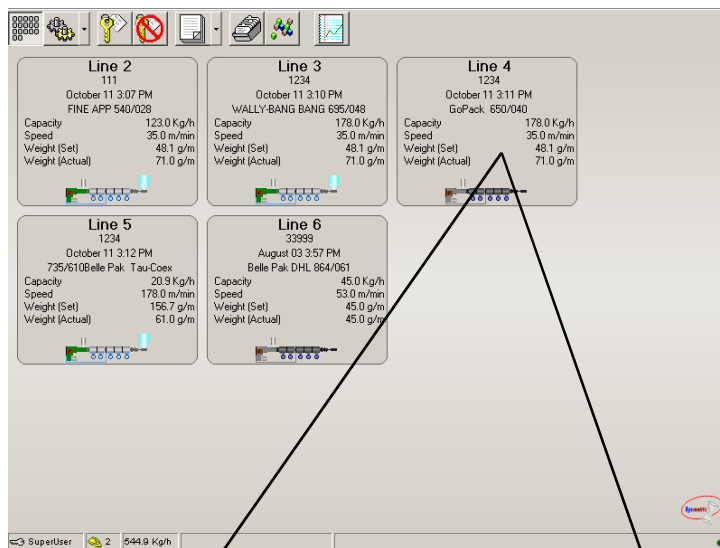


MinuMan™

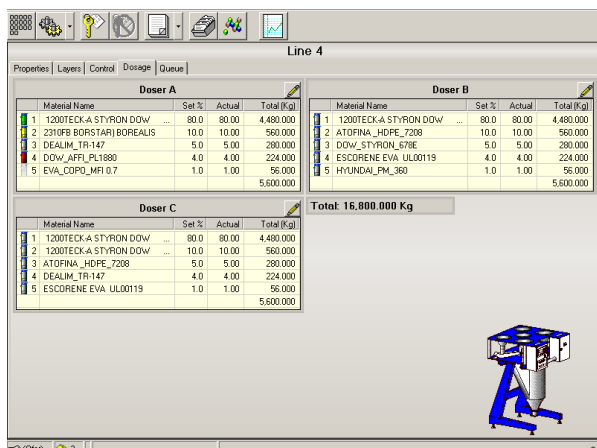
Dosing units and line control software

Features:

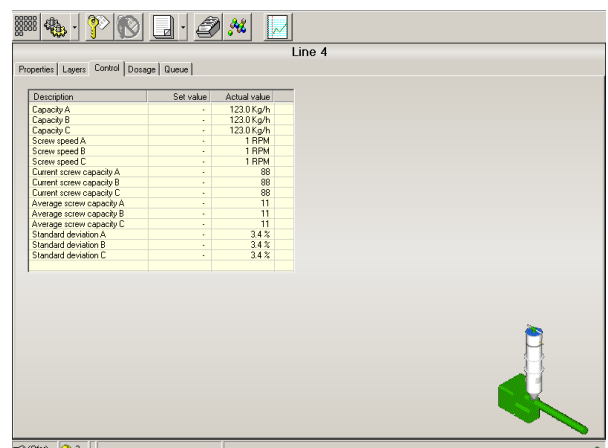
- Full monitoring and control of dosing systems and line values
- Recipe management - saves set points for later use
- Management of the work order queue
- A single PC can control all of the production machines
- Software can be installed in several plant computers at no additional cost
- Easy addition of new machines to the modular system
- Bi-directional communication with the plant ERP
- Password protected software



Main Screen – Plant lines



Dosing systems control



Layers control

Machine Status

View of all the machine's statuses with the ability to drill-down on each machine individually

Recipes

Easy recipes creation as snapshot of current line's values

Simple means of editing duplicating and deleting recipes

Mutual recipes for identical lines

Work Order Queuing

Each work order contains a recipe (product card)

Every line has its own work order queue

The priority of the work order in the queue can be changed

Recipes can be edited while queuing

Working orders can be relocated from one line to another

Working orders can be deleted from the queue

Production Reporting

All production transactions are recorded to the data base

Full reports of material consumption under different categories

Performance reports over graphs and exportable to Excel

MSDE data base (free version of SQL server) available for any report generator