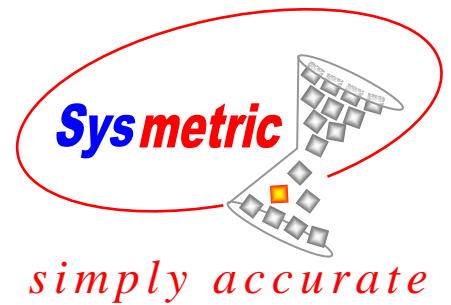


# Scada Software

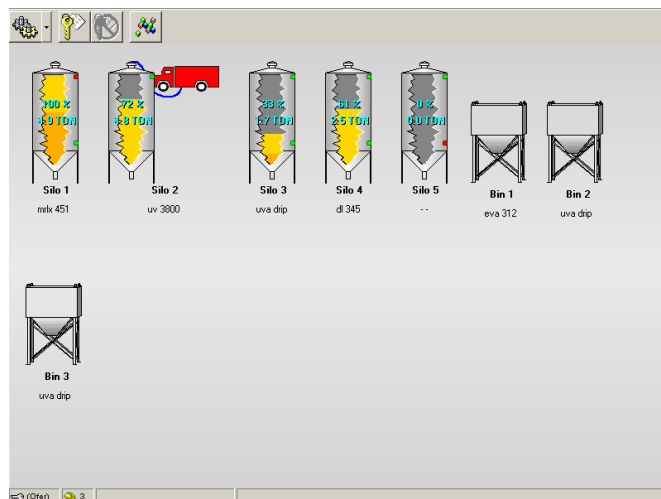


## SiloMan™

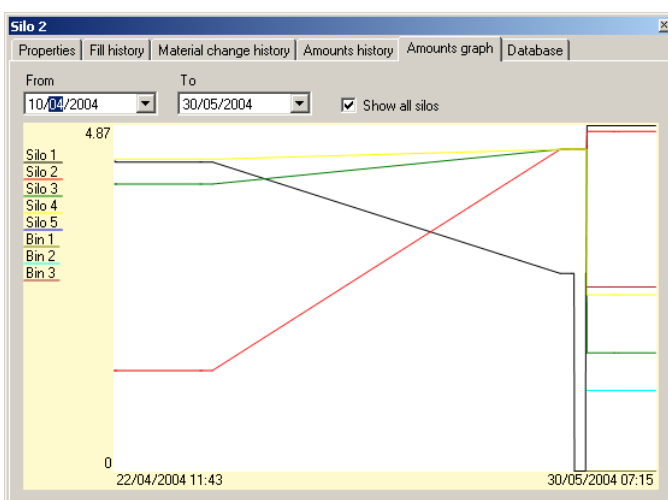
*Silo monitoring software*

### Features:

- Accurate monitoring of material in silos
- Loading status
- Loading history
- Active batch calculations
- Software can be installed in several plant computers at no additional cost
- Easy addition of new silos to the modular system
- Bi-directional communication with the plant ERP
- Password protected software



*Main Screen – Silo status*



*Material level*

A form titled "Material filling" for controlling the filling process. It includes fields for "Selected silo" (Silo 2) and "Material" (KAFRIT UV 3900). The "Details" section contains fields for "Filling Source" (Truck), "Driver's name" (Levi), "Material amount" (9), "Delivery card No." (346636), "Batch" (BA\_6543\_UV), and "Container No." (34). The form has a green checkmark icon and a red X icon at the bottom.

*Material filling control*

### **Silo Accumulation**

Written and schematic presentation of the material accumulated in each silo  
“Full” and “Empty” silo indicators

### **Loading Station Status**

Displays the loading source e.g. truck, big bag etc.  
Minimizes the risk of incorrect material loading  
Starting the loading process stipulated upon software’s approval

### **Silo History**

Load traceability for each silo  
Full material history report for each silo

### **Active Batch Monitoring**

Each silo can contain more than one batch. The different batches then pile on top of one another.  
SiloMan software calculates the different batch arrangements inside the silo as well as the current active batch

### **Interface**

MSDE data base (free version of SQL server) available for any report generator  
Performance reports graphically and exportable to Excel